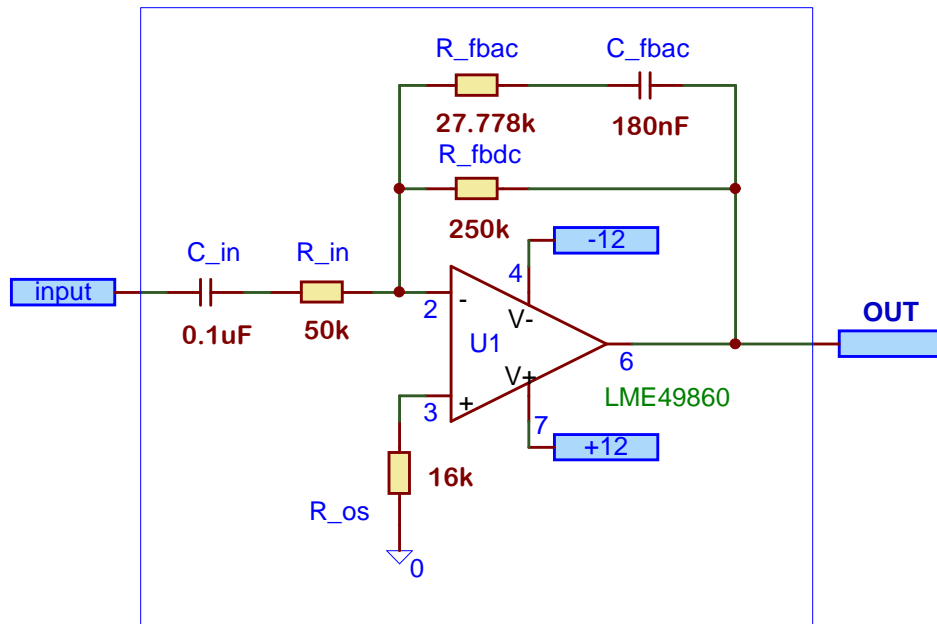
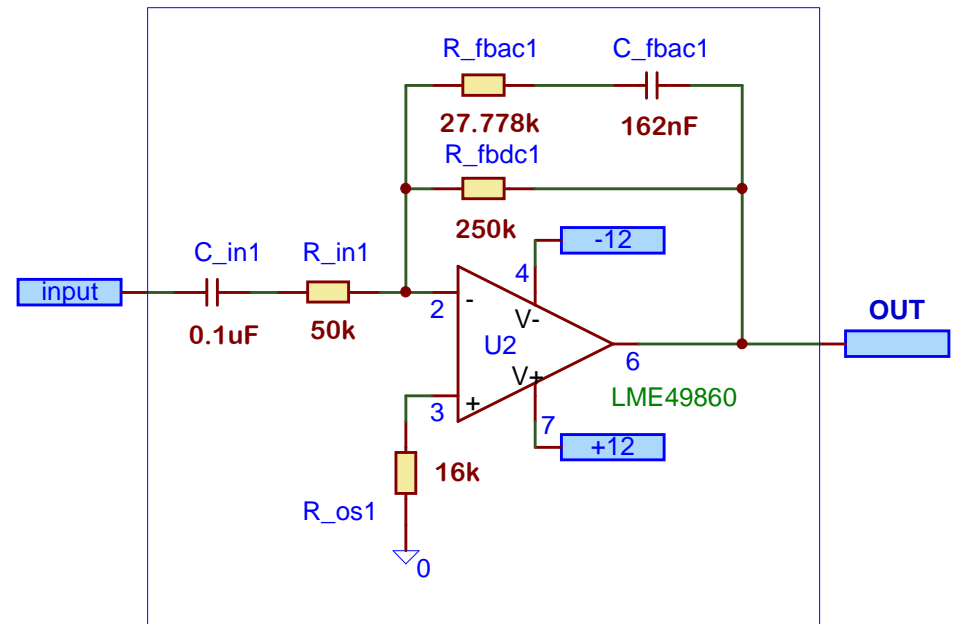


Audio analog compensated input. Inverted scheme. Gain =2 (+6dB).
Schemes of linear phase and linear frequency response.



Linear Frequency Output scheme



Linear Phase Output scheme

$$\begin{aligned} \text{Flat Freq.Resp. } C_{fbac} &= (C_{in} * R_{in}) / R_{fbac}; \\ \text{Flat Phase Resp. } C_{fbac} &= C_{fbac} / K; \\ K &= 1 + (R_{fbac} / R_{fbdc}); \end{aligned}$$